

Korea Institute for Health and Social Affairs

KiHASA



Contents

1. President's Message
2. Vision
3. Mission
4. Organization Culture
5. About KIHASA
 - Health Policy Research Division
 - Health Security Research Division
 - Social Security Research Division
 - Social Service Research Division
 - Aging and Low-fertility Research Division
 - Social Financing and Statistics Research Division
 - Health and Welfare Information Center
6. Organization
7. Library and Publications
8. KIHASA Websites
9. Outreach and Cooperation in Research

President's Message



The Korea Institute for Health and Social Affairs (KIHASA), a national think tank affiliated with the Office of Prime Minister, has for more than four decades committed itself to policy research for the improvement of people's health and welfare.

Conceived in 1971 as the Korea Institute for Family Planning which later merged with the Korea Health Development Institute, KIHASA has since grown alongside Korea's economic advancement to become today a powerhouse of close to three hundred researchers and administrative staff. With their backgrounds in economics, health studies, social welfare, statistics and allied disciplines, KIHASA scholars grapple with the full spectrum of challenges confronting the wellbeing of Koreans, exploring policy solutions that are coherent and in symbiosis with the country's socioeconomic circumstances.

Our research and analyses, based as they are on data and statistical evidence coming from various surveys we carry out firsthand and from other national sources, serve as intellectual signposts in the steps of policymaking in pursuit of the public weal.

In times as these when the demands for public health and social welfare are growing as never before, the questions we delve into in our work consist in not only how to meet such needs, but how to do it in a financially sustainable and publicly supportable manner and, further, in a way that adds to the national productivity.

We take great pride in the organization we have been from our founding onward, in working in a tradition where integrity runs wedded to dynamism and professionalism to alertness. And it is the continuum of this tradition that keeps KIHASA steadfast in tackling challenges facing the quality of life of Koreans, in playing its part to the full to help make Korea a healthy welfare society worthy of the world's envy.

Everything we do at KIHASA we open to your criticism and encouragement.

Thank you.

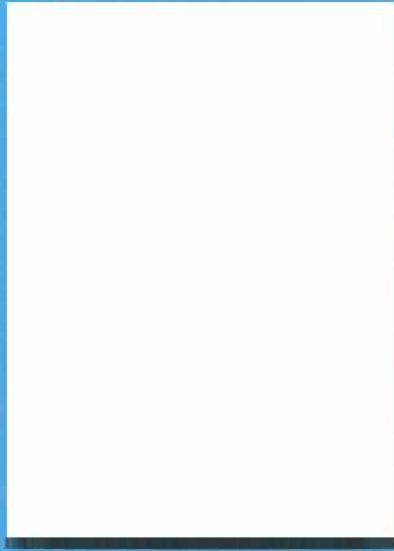
Byong-ho Tchoe
President, KIHASA

Our Vision



Our Mission





Our Vision | A global go to think tank with a ceaseless contribution of knowledge and professionalism to better policymaking





Our Mission | KIHASA is premised on the belief that robust research evidence will lead to better policy decisions and performance, and, in turn, to improved living standards. Thus KIHASA's two-fold remit of providing empirical and analytical bases for short-and long-term policymaking and facilitating the public understanding of policy issues concerning their health and welfare.

Our Culture



The sense of quality runs deep in us.



Being otherwise is unthinkable, given that our work is exclusively about the various aspects of people's quality of life. KIHASA has in place an inclusive process for ensuring the quality of every project it undertakes. The process starts even before the birth of a project and lasts until it culminates in publication. Stepwise peer reviews that involve both in-house and external reviewers are a defining facet of KIHASA's quality-oriented culture where all its researchers consider evidence and analytic rigor de rigueur in every research project they carry out.

In our teamwork,
another common fiber
that runs through KIHASA,
fresh ideas bud, blend,
and burgeon into
rounded-out outcomes.

KIHASA researchers come from a wide breadth of disciplinary backgrounds, from economics and social welfare and from public health studies to statistics. Formed on a project basis and as needed, every team here is less a showcase for individual researchers to go through their paces than a venue for collaboration toward an aggregate goal.



Health Policy Research Division

Recent research projects include:

The division takes on research projects with the goal of improving Korea's health care system and the health of Koreans. To this end, HPRD researchers actively take part in the planning of mid- to long-term strategies for health care improvement and health promotion, looking into people's health care utilization behaviors, health care expenditure and health care delivery. The division also works on lifestyle and dietary behaviors associated with smoking, alcohol use, and nutrition intake, and a wide range of public health risks concerning daily hygiene, food safety, potential disease outbreaks, and the impact of climate change. HPRD's research commitment extends to cooperation in health policy research with developing countries and to seeking potential areas of collaboration in health care with North Korea in preparation for a future Korean unification.

- » Development and Assessment of Mid- to Long-term Strategies for Health Care and Health Promotion
- » Health Care Utilization Behaviors and Health Spending
- » Health Promotion Policy and Programs for Socially Vulnerable Populations
- » Appropriate Allocation of Health Workforces to Local Communities
- » Building an Effective Cooperation Mechanism in Health Sector between the Two Koreas

Core research staff

Young-Ho Jung, Ph.D	Director	Health Economics, Health Policy	yhjung@khasa.re.kr
Kee-Hey Chung, Ph.D	Senior Research Fellow	Food Policy & Evaluation, Nutrition Policy	khchung@khasa.re.kr
Nam-Soon Kim, Ph.D	Research Fellow	Evidence Informed Health Policy, Quality of Health Care, Women's Health	artemine@khasa.re.kr
Jeongseon Kim, Ph.D	Research Fellow	Food Policy, Food Safety Management	kjs0416@khasa.re.kr
Hye-Ryun Kim, Ph.D	Research Fellow	Health Promotion, Public Health Nutrition	hrkim@khasa.re.kr
Mee-Kyung Suh, Ph.D	Research Fellow	Health Education, Health Promotion	kyungsm@khasa.re.kr
Youngho Oh, Ph.D	Research Fellow	Health Policy and Management, Health Policy, Health Workforce Planning	ohyho@khasa.re.kr
Eun Jin Choi, Ph.D	Research Fellow	Tobacco Control Policy, Health Education and Health Promotion	eunjin@khasa.re.kr
Hyeong-Soo Choi, Ph.D	Research Fellow	Health Policy, Health Promotion	jsoc@khasa.re.kr
Nami Hwang, Ph.D	Research Fellow	Maternal and Child Health, Community Health Nursing	nami@khasa.re.kr
No-Seong Kwak, Ph.D	Associate Research Fellow	Food Safety Policy, Food Policy	forsome@khasa.re.kr
Dae Jung Kim, Ph.D	Associate Research Fellow	Health Economics, Industrial Organization	kimdj07@khasa.re.kr
Kang Jae Yun	Associate Research Fellow	Health Policy	kjyun@khasa.re.kr

Health Security Research Division

Recent research projects include:

- » A Study for Broadening the Coverage of the National Health Insurance
- » How to Improve NHI Premium Collection System
- » Ways to Raise the Efficiency of NHI Reimbursement
- » Maximizing the Efficiency of Health Resources Management
- » Managing Drug Safety and Pharmaceutical Expenditure

Core research staff

Young Seok Shin, Ph.D	Vice President	Social Insurance	ysshin@kihasa.re.kr
Sangyoung Lee	Director	Health Policy, Korean Traditional Medicine	yslee@kihasa.re.kr
Jin Soo Kim, Ph.D	Research Fellow	Health Economics, National Health Insurance	econ123@kihasa.re.kr
Sylvia Park, Ph.D	Research Fellow	Pharmaceutical Policy, Pharmaceutical Industry	spark@kihasa.re.kr
Hyun Woong Shin, Ph.D	Research Fellow	Social Insurance, Health Insurance	shinhw@kihasa.re.kr
Dongjin Kim, Ph.D	Associate Research Fellow	Health Promotion, Health Education	djkim@kihasa.re.kr



健康한
福祉社會의 發源

KIHASA

韓國保健社會研究院



Social Security Research Division

Recent research projects include:

- » Social Polarization and Policy Prescription
- » A Cross-National Comparative Study of Near-Poverty
- » Education Gaps and Poverty Trap
- » How to Improve the Subsidy Program for Low-Income Bracket
- » Supporting Social Excluded: with a Focus on the Dynamic and Multidimensional Characteristics of Social Exclusion

Core research staff

MeeGon Kim, Ph.D	Director, Research Planning and Coordination Division	Public Assistance, Poverty	kmegon@khasa.re.kr
Shin-Wook Kang, Ph.D	Director	Poverty, Income Inequality	kangsw@khasa.re.kr
Taewan Kim, Ph.D	Research Fellow	Poverty & Inequality, Public Assistance, Rural Welfare	taewan@khasa.re.kr
Sang-Ho Nam, Ph.D	Research Fellow	Income/Asset Distribution, CGE Modeling, Economic Fluctuations	johnnam@khasa.re.kr
Dae-Myung No, Ph.D	Research Fellow	Working Poor, Public Assistance, Activation Policies	dmno@khasa.re.kr
Eugene Yeo, Ph.D	Research Fellow	Poverty & Inequality, Public Assistance	eugene@khasa.re.kr
Jongwook Won, Ph.D	Research Fellow	National Pension, Welfare Finance	wonjw@khasa.re.kr
Sukmyung Yun, Ph.D	Research Fellow	Public Pension, Social Insurance	smy1985@khasa.re.kr
Taejin Lee, Ph.D	Research Fellow	Public Assistance Assessment, Housing Welfare	ginhome@khasa.re.kr
Hyon Joo Lee, Ph.D	Research Fellow	Poverty, Social Assistance Administration, Social Cohesion, Community Welfare	hjee@khasa.re.kr
Seokpyo Hong, Ph.D	Research Fellow	Social Safety Nets Capacity Building, Medical Insurance, Medical Aid	seokp@khasa.re.kr
Moon-Kil Kim	Associate Research Fellow	Poverty, Inequality	jcwood71@khasa.re.kr
Hwa Yeon Shin, Ph.D	Associate Research Fellow	Public Pension Actuarial Valuation, Public Pension Policy, Long-term Projection of Social Expenditure, Income Protection for Disabled	shinhy@khasa.re.kr
Hyun-Soo Choi	Associate Research Fellow	Social Welfare Policy(Tax-Benefit Policy), Poverty & Inequality	ppji@khasa.re.kr





Social Service Research Division

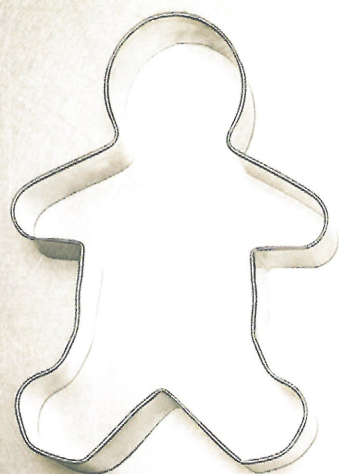
Recent research projects include:

- » Social Services: Delivery and Governance
- » Social Services Sector: Employment, Structure, and Industrial Relations
- » Assessment of Social Service Programs and Facilities
- » A Study of Child and Youth Welfare
- » Welfare Policies for the Disabled in Korea
- » Development of Community-based Welfare Programs

Core research staff

Hyekeyu Kang, Ph.D	Director	Social Service Provision System, Social Welfare Administration	hyekeyu@kihasa.re.kr
Seung Kwon Kim, Ph.D	Senior Research Fellow	Family Welfare, Population Policy, Policy Evaluation	kimsk@kihasa.re.kr
Yong Chan Byun, Ph.D	Senior Research Fellow	Welfare for the Disabled, Family Welfare	byc@kihasa.re.kr
Meesook Kim, Ph.D	Research Fellow	Child Welfare, Social Service, Family Welfare	mskim@kihasa.re.kr
Seong-Hee Kim, Ph.D	Research Fellow	Social Welfare, Welfare for the Disabled, Survey on Disabled Persons	shkim@kihasa.re.kr
Yu-Kyung Kim, Ph.D	Research Fellow	Family and Women Welfare, Childcare and Child Welfare, Evaluation for Policy and Facility	kyk@kihasa.re.kr
Se-Kyung Park, Ph.D	Research Fellow	Social Service Policy, Child and Family Welfare	parks@kihasa.re.kr
Cheol Seon Lee, Ph.D	Research Fellow	Employment, Social Service Job	cslee@kihasa.re.kr
Hongwon Chung, Ph.D	Research Fellow	Policy Analysis & Design, Welfare Delivery System, Income Maintenance Policy	chunghw@kihasa.re.kr
Susie Park, Ph.D	Associate Research Fellow	Social Service Policy, Workfare Policy	susie_park@kihasa.re.kr





Aging and Low-fertility Research Division

Recent research projects include:

The effect of population aging and low fertility is pervasive in Korea. The division's job against this background is to explore what consequences such demographic changes have for Korea's socioeconomic dimensions and beyond, from the labor markets to the education sector and from social security to national security. The research work here includes identifying efficient ways of harnessing the opportunities underlying the ongoing transition in the demographic makeup and crafting policy options to shore up the country's long-term sustainability.

- » A Study of the Socioeconomic Effect of Current Demographic Changes
- » The Impact of the Inflow of Foreign Workers
- » Low Fertility: Its Causes and Policy Options to Reverse It
- » Old-age Income Protection and Long-term Care in An Aging Korea
- » Welfare Needs in Times of Population Aging and Low Fertility: Survey and Monitoring

Core research staff

Sam-Sik Lee, Ph.D	Director	Population Analysis, Low Fertility and Aging Policy	ls@kihasa.re.kr
Kyunghee Chung, Ph.D	Senior Research Fellow	Welfare for the Elderly, Family Welfare	khlc@kihasa.re.kr
Duk Sunwoo, Ph.D	Research Fellow	Long-Term Care Policy, Health and Social Welfare for the Elderly	duksw@kihasa.re.kr
Yoon-Jeong Shin, Ph.D	Research Fellow	Fertility, Family Policy, Childcare	yjshin@kihasa.re.kr
Young-Hee Oh, Ph.D	Research Fellow	Welfare for the Elderly, Elderly Health Care	oyh@kihasa.re.kr
Eun Jeong Kim, Ph.D	Associate Research Fellow	Low Fertility, Family Economics	kim880@kihasa.re.kr
Hyun Sik Kim, Ph.D	Associate Research Fellow	Demography, Child Development	hskim@kihasa.re.kr
Jong Seo Park, Ph.D	Associate Research Fellow	Policy on Low Fertility	parkjs@kihasa.re.kr
Sang-lim Lee, Ph.D	Associate Research Fellow	Demography, Health Promotion, Migration & Migrant	slee@kihasa.re.kr
Yoon Kyung Lee, Ph.D	Associate Research Fellow	Elderly Long-term Care, Elderly Welfare	yklee@kihasa.re.kr



Social Financing and Statistics Research Division

Recent research projects include:

- » Development of Analytical Tools for Social Budgets
- » Assessment of the Scope, Structure and Currents of Social Expenditures
- » Development of a Model for Social Expenditure Projection
- » Social Survey of Health and Welfare
- » How to Produce, Refine and Deliver Health and Welfare Statistics

Core research staff

Kyeong Hoan Gho, Ph.D	Director	Social Welfare	khgho@kihasa.re.kr
Young-sik Chang, Ph.D	Senior Research Fellow	Applied Statistics, Health Statistics	yschang@kihasa.re.kr
Seirok Doh, Ph.D	Research Fellow	Statistical Computing, Health and Welfare Statistics	srdoh@kihasa.re.kr
Gun-Chun Ryu, Ph.D	Research Fellow	Economics Social Expenditure and Finance, Health Economics and Policy, Economic Evaluation	gchryu@kihasa.re.kr





Health and Welfare Information Center

Information today is something everyone cannot do without in everyday life. It is increasingly digitized in all realms of human life to allow for broader access and more relevant use. Information digitization gains added importance when it comes to people's health and welfare. The center carries out various activities, including research on infrastructures for information digitization and the planning and actual operation of information delivery systems, with a view to assisting in the making of health and welfare policies and leading their implementation to the right direction.

Recent research projects include:

- >> Infrastructure for the Digitization of Health and Welfare Information
- >> Planning of Health and Welfare Information Digitization
- >> Analysis and Assessment of Health and Welfare Information Digitization
- >> Establishment and Management of Health and Welfare Information Systems
- >> Monitoring and Protection of Personal Health and Welfare Information
- >> Analysis of the Demand for Information Digitization

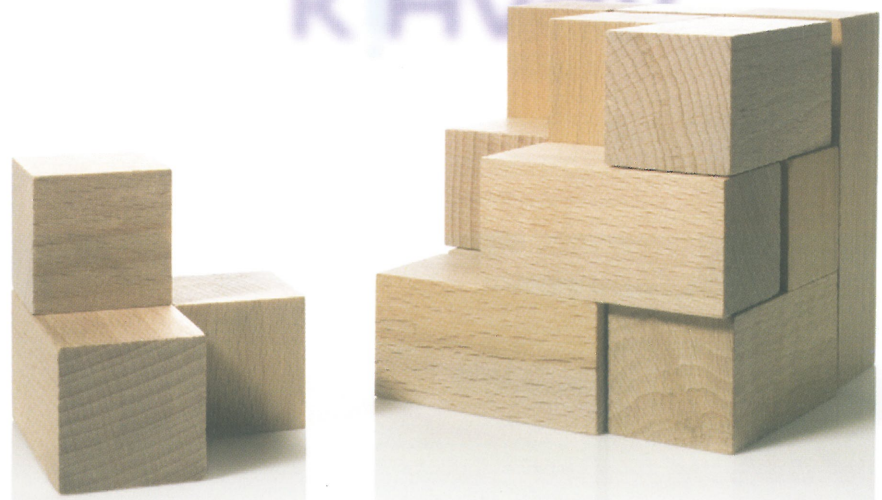
Core research staff

Young-Chul Chung	Director	Develop of Health & Social Welfare Information System, Information Strategie Planning of Health & Social Welfare	cyc@khasa.re.kr
Tamin Song, Ph.D	Research Fellow	Information System Development, Health Information, Health & Welfare Statistics	tmsong@khasa.re.kr

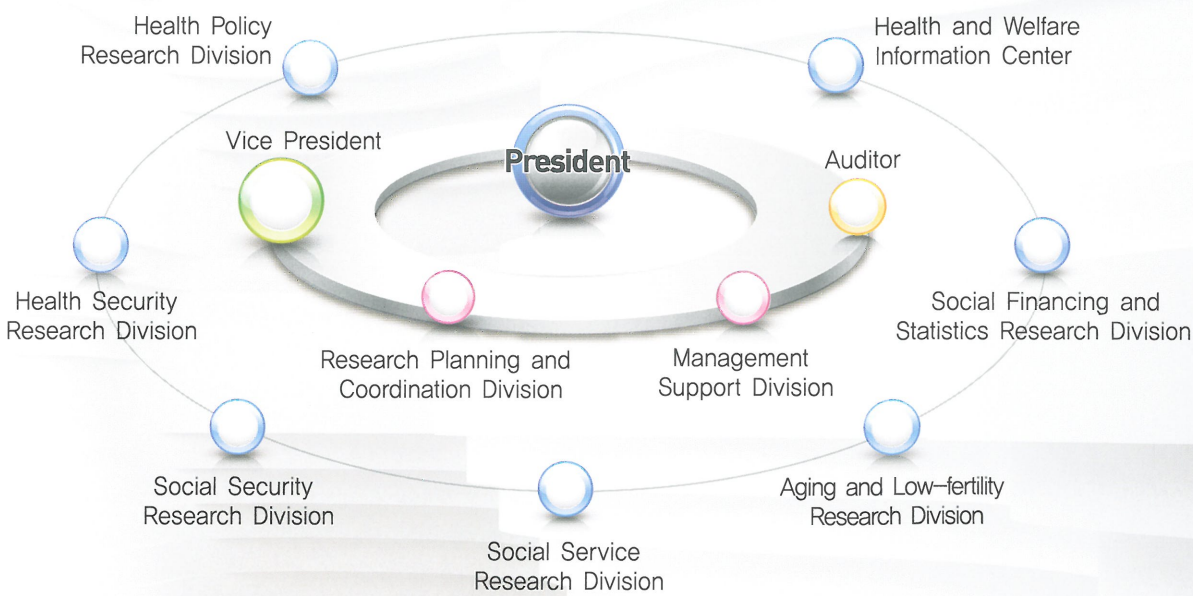
Research Centers

Emerging social issues require research responses that are prompt and highly-focused. Created to meet such needs in an interdisciplinary way, KIHASA's research centers are as diverse as follows.

- >> Center for Health Research in Response to Climate Change
- >> Center for Social Security Projection and Statistics
- >> International Cooperation Center for Health Policy Research
- >> Center for International Social Security Research
- >> Monitoring Center for Social Integration
- >> Center for Welfare Panel Studies
- >> Center for Health Panel Studies
- >> Basic Security Evaluation and Monitoring Center
- >> Child Rights Monitoring Center
- >> Research Center for the Welfare of the Disabled
- >> Center for the Development and Assessment of Community Welfare
- >> Population Policy Development Center
- >> Funeral Information Management Center
- >> Center for Long-term Care Policy Research
- >> Social Survey Center



Organization



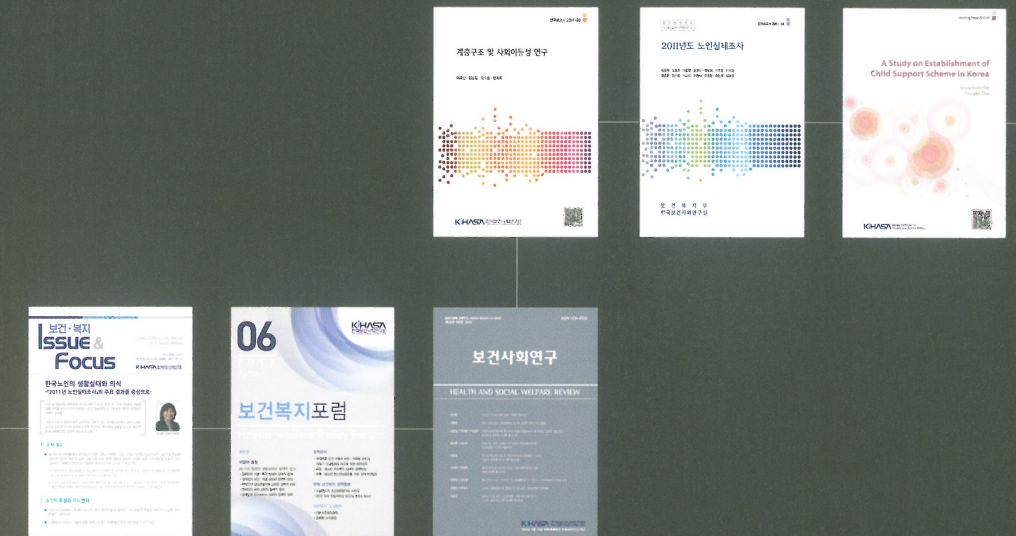
Library

KIHASA's library holds a large collection of professional publications and academic journals on health care, social welfare, social security, population and family planning. It maintains nearly 50,000 volumes of monographs, research papers, dissertations, and conference proceedings, and a collection of over 750 periodicals in 25,000 volumes and 300 CD-ROM titles. The library also provides a database of more than 9,000 journals. The library is open to the public, 9am to 6pm, Monday to Friday, by appointment. Visitors may make reference use of the library holdings and have online access to articles in the database collection.

For appointment and help:

Phone: 02-380-8229

E-mail: library@kihasa.re.kr



Publications

KIHASA produces over 200 publications yearly in a variety of formats. They cover the gamut of social policy issues that require consideration and solutions.

- » **Research Reports** serve as a contribution to the state of knowledge. Their forte is that they are theoretically-grounded and methodologically rigorous. They define problems and present the findings to academics, the research community, and policymakers, helping them see issues from multiple perspectives.
- » Intended to contribute to informed decision making, **Policy Reports** explore current policy issues and provide analyses and solutions that are highly specific to the needs of policymakers and lawmakers.
- » Slim in form and pithy in substance, **Working Papers** highlight the development, key findings of work in progress.

The list of publications is available upon individual request.

- » Periodicals
 - **Health and Social Welfare Review** is an academic quarterly open to submissions written in English and Korean.
 - **Health and Welfare Forum** is a monthly designed to share with readers the latest findings from KIHASA's current research projects.
 - **Health and Welfare, Issue & Focus** is a weekly bulletin that briefs readers on current issues in health and social welfare.

KIHASA Websites



Korea Institute for Health and Social Affairs (<http://www.kihasa.re.kr>):

KIHASA website provides access to the full text of KIHASA publications, including periodicals. In addition, you can receive weekly KIHASA Webzine and monthly KIHASA e-Newsletter by signing up on our website to join the KIHASA's mailing list.



Korea Welfare Panel Study (<http://koweps.re.kr>):

The Korea Welfare Panel Website is loaded with a wide range of resources including sampling techniques, questionnaires and database (SPSS, SAS, and STATA), analysis reports, and seminar proceedings concerning various surveys on the living conditions of Korean households and their welfare needs.



Korea Health Panel (<http://www.khp.re.kr>):

The website of the Korea Health Panel provides a wealth of information on health expenditures, the dynamics of health care resources allocation, health surveys and their sampling methods, and related research findings.

Health and Welfare Statistics (<http://hawelsis.kihasa.re.kr>):

The Health and Welfare Statistics Portal is storehouse of statistics, newspaper articles, statistical terms, and survey micro-data in both standardized and tailored formats.



Geumyeon Gillajabi (<http://nosmokeguide.or.kr>):

Korea's high rate of smokers put the health of many of its people in jeopardy, which called for an effort to implement a national smoking cessation program. An integral part of this effort was the establishment in 2001 of the portal site Geumyeon Gillajabi. A rich wellspring of smoking cessation information, Geumyeon Gillajabi features, to cite just a few among many others, virtual smoking cessation classes for different groups of smokers, e-counseling, professional columns, and no-smoking webzine.



Healthpark (<http://www.healthpark.or.kr>):

The Internet has made it easier and faster to find health information; but the flipside of such convenience is that much of Internet information is unreliable and misleading at best. Healthpark is a trusted website where users can find to-the-point and reliable health information without having to surf through one site after another.



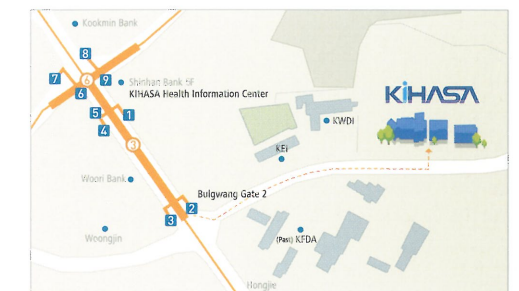
Outreach and Collaboration in Research



We take the outreach of our research seriously. It is because our work is not only for our clients, but for the public as a whole, the ultimate "end-users." Making the work we do known to the public is integral in translating it into policy and practice. We want our reports to be occasions for increasing the public's knowledge base concerning issues that concern them. Going beyond merely publishing our work for an audience of clients and peers, we sponsor and hold policy forums and hearings on a regular basis to exchange ideas and facilitate a better public understanding of our work and government policies. Also, our researchers frequently contribute op-ed articles to major newspapers and disseminate their research findings via media comments, lectures, and interviews.

Further, KIHASA has actively promoted and engaged in joint research projects with a broad range of research organizations and academic communities from around the world, sharing and exchanging ideas, experience and knowledge. Our recent research partners include: East-West Center (EWC), Hawaii; United Nations Population Fund (UNFPA); International Social Security Association (ISSA); National Institute of Population and Social Security Research (NIPSSR), Japan; National Institute of Public Health (NIPH), Japan; Taiwan Provincial Institute of Family Planning (TPIFP); World Health Organization (WHO); the World Bank (IBRD); the OECD; the Institute of Population and Labor Economics, Chinese Academy of Social Sciences, China; Population Research Center, University of Texas at Austin; National Opinion Research Center, University of Chicago; and UCLA Center for Health Policy Research.

Directions



Address

Jinhungro 235, Eunpyeong-gu, Seoul 122-705, Korea

Phone

+82-2-380-8000

Fax

+82-2-352-9129, 2181

Transportation

Take subway Line #3 to Bulgwang Station. Leave the station via Exit #2. Walk straight ahead for 400 m until you find KIHASA on your left.



Jinhungro 235, Eunpyeong-gu, Seoul 122-705, Korea **Tel** +82-2-380-8000 **Fax** +82-2-352-9129, 2181 **E-mail** kihasa@kihasa.re.kr
<http://www.kihasa.re.kr>